

T0 | Studio

Piso | Floor 3

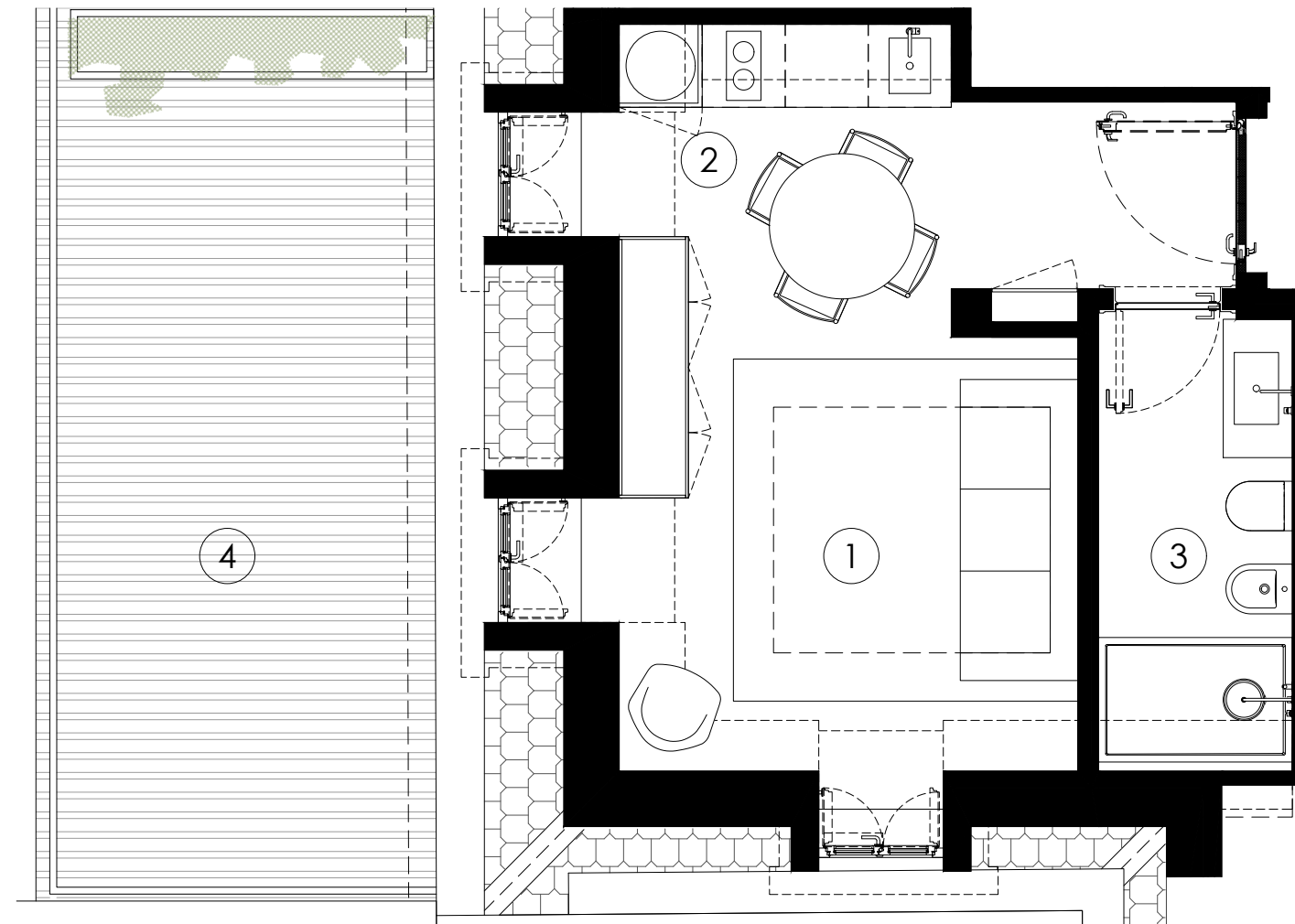
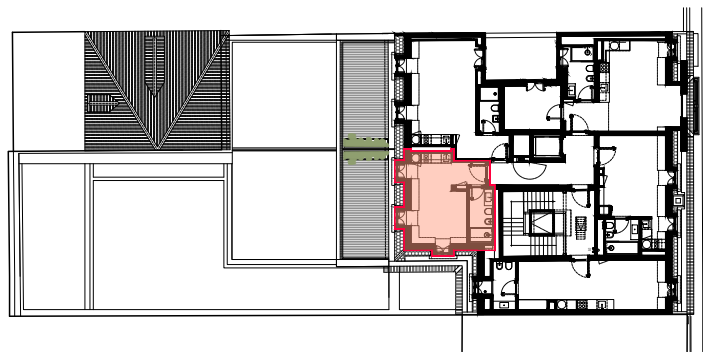
Fracção | Unit S

ABP | Private Gross Area

Interior **32.05m²**

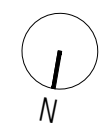
Exterior **20.00m²**

Total **52.05m²**



Área Útil | Carpet Area

1		18.85 m²	Sala Living Room
2		1.45 m²	Cozinha Kitchen
3		4.55 m²	I.S. Bathroom
4		20.00 m²	Terraço terrace



ESCALA 1:50